



**IBN SINA NATIONAL COLLEGE FOR MEDICAL
STUDIES, JEDDAH**

KINGDOM OF SAUDI ARABIA

Pharm. D. Program

Accredited By



STUDENT HANDBOOK



**Copyright © 2021 Ibn Sina National College for
Medical Studies
Jeddah, KSA**

All rights reserved. No part of this document may be reproduced in any form or by any means, including information storage and retrieval systems, without permission in writing from Ibn Sina National College for Medical Studies.

TABLE OF CONTENT:

No.	Description	Page No.
1	Mission of the Program	3
2	Pharm. D. Program Overview	3
3	EEC- NCAAA Accreditation	8
4	Vice Dean of Pharm. D. Program	9
5	Summary of credit hours and duration	10
6	Organization Chart - Pharm. D. Program	11
7	Pharm. D. Program Goals	12
8	Curriculum Study Plan	13
9	Program Graduate Attributes	20
10	Program Learning Outcomes	21
11	Teaching Methods	23
12	Assessment Methods	24
13	Dress Code	25
14	Important Contact Numbers	26

PHARM. D. PROGRAM MISSION

To graduate competent clinical pharmacists capable of providing comprehensive pharmaceutical care to the community with an aptitude to Lifelong learning through provision of knowledge, clinical skills, research abilities and ethics of practice within a motivating learning environment.

PHARM. D. PROGRAM OVERVIEW

Pharm. D. Program is responsible for preparing students to begin the practice of pharmacy as vital members of the health care team or to assume other roles where pharmacists' knowledge and skills are required. Pharmaceutical education will also prepare students to function as professionals and informed citizens in a changing health care environment. It is responsible for generating and disseminating new knowledge about pharmaceuticals and about the role of pharmaceuticals in the unique care system of Saudi Arabia. Pharm. D. Program is fully accredited by Education Evaluation Commission: National Centre for Academic Accreditation and Assessment, Saudi Arabia.

ISNC Pharm. D. Program acknowledges Pharm. D. as an evolving mode of pharmacy practice in which the pharmacist, in concert with other health professionals, takes an active role on behalf of patients in making appropriate drug choices, by effecting distribution of medications to patients, and by assuming direct responsibilities to empower patients to achieve the desired outcomes of drug and related therapy.

The professional program in pharmacy provides educational preparedness to enable the pharmacist to collaborate with other health professionals and to share in responsibility for the outcomes of drug and related therapy. The professional program in pharmacy also promotes the knowledge, skills, abilities, attitudes, and values necessary to the aspect of pharmaceutical care directed toward the general practice of pharmacy in any setting. The philosophy of practice as well as the necessary professional attitudes and ethics, will nurture during the course of study. Moreover, the College insures the professional growth of students, including a positive outlook toward all aspects of pharmacy practice. The faculty and professional staff are qualified individuals with unique interests and backgrounds who are dedicated to educating pharmacy students according to international principles and practices of pharmaceutical care.

ISNC Pharm. D. program commenced in 2004 corresponding to 1425H, duly licensed by the MOHE (began its operations in its own premises located on Al-Mahjar Street, next to the King Abdul Aziz Hospital, in the Southern part of Jeddah, with a mission to fulfill the nation's needs by producing trained Pharm. D. graduates.

The campus of ISNC is spread over an area of 27,500 sqm and is self-contained and accommodates all necessary facilities including the Ibn Sina College hospital. Design of the main building is in the shape of the letter 'H' where each of the wings houses the genders separately, yet facilitates easy communication and access to critical facilities and the central administrative setup. However, additional hospitals (New Al Jedaani Hospital at Ghulail District and Al Jedaani Hospital at Al Safa District) from within Al Jedaani Group are also deployed in training the students in order to ensure adequate exposure of each student to clinical facilities.

Pharm. D. Program new curriculum is designed as patient oriented care. The curriculum employs the National Qualification Framework (NQF) for formulating the learning outcomes of the program and its different courses.

Development of this new curriculum at ISNC was closely supervised by a college steering committee that included internal and external members who have experience in curriculum design and development, and it come as a product of efforts of collaboration between:

- Subject experts in the field of Clinical Pharmacy.
- Experts in Medical Education.
- Experts in curriculum development.
- Experts in quality assurance in education.

A **modern curriculum** focused on rigorous standards in literacy, numeracy, skills and character development will be prepared”. With regards to this item and continuing developments in pharmaceutical and clinical sciences and technology, updating the current curriculum is essential to meet the advances in the field of Clinical Pharmacy.

The first curriculum of Pharm. D. Program at ISNC was initially designed and developed on 2004-2005 by **King Abdullah Consulting and Research Institute (KACRI)**. The curriculum has been designed based on the concept of “learning objectives” rather than “students’ learning outcomes”, where the focus was mainly on the process rather than the product and the intentions of the program rather than the achievements of the students.

In the academic year 2014-2015, it was strongly recommended to shift from “learning objectives” to “students’ learning outcomes” so that the program be compatible with the requirements of the **Education Evaluation Commission – National Center for Academic Accreditation and Education Evaluation (EEC-NCAAA)** in order to apply to for the academic accreditation on the national level. That shift has been done through in-house experts in medical education and curriculum development in consultation with external experts in Clinical Pharmacy education. However, this process was like grafting an existent curriculum, without a comprehensive change in all the components of that curriculum.

ISNC holds a distinction in the country for being as the first private institution to introduce Pharm. D degree in its pharmacy program. The Pharm. D program, in ISNC has two academic departments’ namely pharmaceutical science department and Clinical Pharmacy & pharmacology department. The design of the Pharm. D. program conforms to national as well as international standards of pharmacy education in building up a curriculum and a study plan and has made appropriate revisions/changes as required to suit the teaching learning strategies at the college. The introduction of Saudi Digital library, Wi-Fi and more digital

learning resources have added to the teaching and learning process.

Field experience activities are abundant in the program during the clerkships. The students benefit largely from community activities and training in both governmental and private hospitals and get exposed to a variety of cases.

Commendable work has been done to identify Program learning outcomes (PLO) aligned with the five learning domains of the National Qualification Framework. The establishment of a Medical Education Unit (MEU) has helped to develop the Course Learning Outcomes (CLO) and align with the PLOs.

PLOs, Assessment Methods, and teaching Strategy are aligned to articulate a consistent agreement between the student learning and teaching methods. The CLOs are well explained to the students at the beginning of each course.

ISNC and Pharm. D. Program is accredited by Education Evaluation Commission: National Center for Academic Accreditation and Assessment, Saudi Arabia (EEC-NCAAA).

BENEFITS OF ACCREDITATION:

» Accreditation assures that a program has met quality standards set by the profession.

» Accreditation helps students and their parents choose quality college programs.

» Accreditation enables employers to recruit graduates they know are well-prepared.

» Accreditation provides a structured mechanism to continuously assess, evaluate, and improve the quality of the program.

» Accreditation is an important factor when a college or university is deciding whether to accept transfer credit from a student's previous school.

VICE DEAN PHARM.D. PROGRAM,

Dr. ABDULAZIZ ALYAHYA, MSc, PhD, USA

Received his PhD in Pharmacology and Toxicology from university of Kansas, Lawrence, KS, United States. He is Associate Professor in Department of Pharmacology, College of Pharmacy, King Saud University, Riyadh. Dr. Abdulaziz AlYahya is currently the Vice Chairman, Board of Trustees, Ibn Sina National College for Medical Studies, Jeddah, KSA. In addition, he is an associate member of international collaboration on repair discoveries (ICORD), University of British Columbia, Vancouver, BC, Canada. Also, he is a member of the society for Neuroscience.

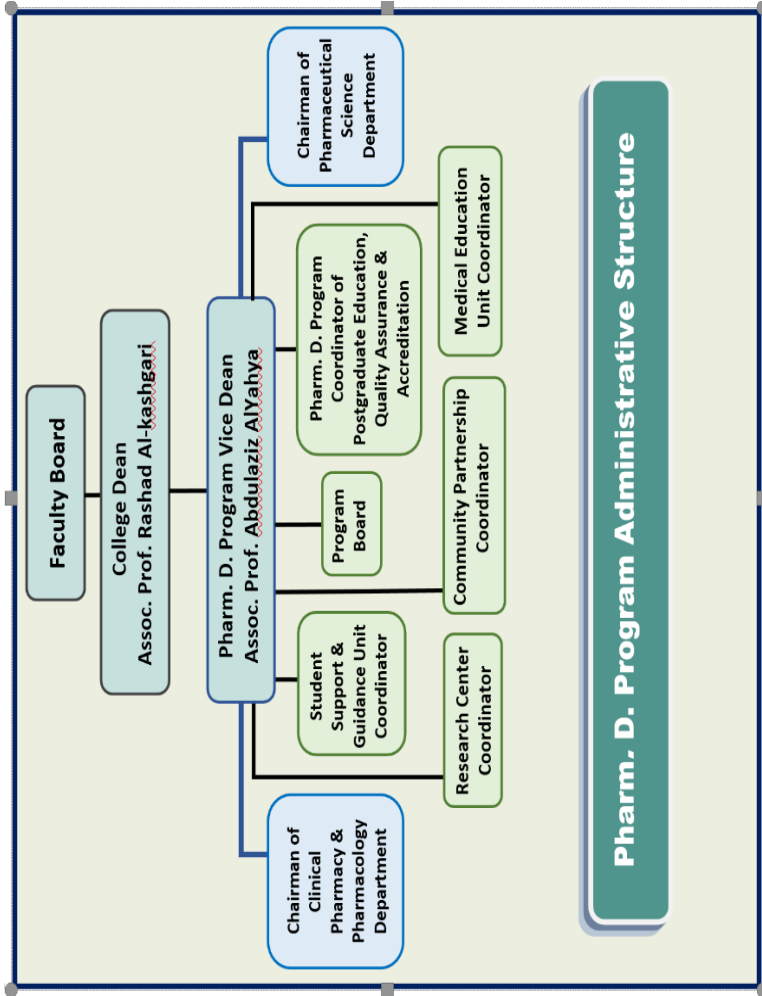
SUMMARY OF CREDIT HOURS AND DURATION

1. Program title and code: Pharm. D. Program.
2. Credit hours required for completion of the program: 197.
3. Degree awarded on completion of the program: Doctor of Pharmacy (Pharm. D.).
4. Professional occupations for which graduates are prepared: Clinical Pharmacist.

Foundation Year	1 year	33 credits
Pharmacy courses	4 years	134 credits
Clinical Clerkship	1 year	30 credits
Total	6 Years	197 credits

Upon successful completion of the 5 academic years in Pharm. D. As a student, the next phase is a yearlong **Compulsory clerkship Program** wherein the intern engages in additional field work to enhance and expand their skills. The clerkship credits are 30hours to complete all ten rotations.

ORGANIZATION CHART



PHARM. D. PROGRAM GOALS

Goal 1
To promote program excellence and effectiveness that produces competent provider of Clinical Pharmacy & Pharmaceutical Care who are productive researchers and healthcare leader.
Goal 2
To apply international best practices in quality of pharmacy education including student-centered learning, integration of sciences, research and extensive experiential education.
Goal 3
To promote collaborative professional practice through inter professional education.
Goal 4
To prepare graduates for continuing professional development and life-long learning.
Goal 5
To promote information-technology environment as per curricula requirements.
Goal 6
To enhance the provided community activities to meet the health needs of the society.
Goal 7
To expand scientific research and enhance its quality to maximize the research impact.

CURRICULUM STUDY PLAN- NEW CURRICULUM

FOUNDATION YEAR -Year-1					
Semester -1(Level-1)			Semester -2(Level-2)		
Course Code	Course Title	Credit Hours	Course Code	Course Title	Credit Hours
ENGL 101	English for Academic Purposes-I	7 CR (6+1+0)	ENGL 102	English for Academic Purposes-II	4 CR (3+1+0)
PHYS 101	Medical Physics	3 CR (2+1+0)	ISLM 102	Islamic Ethics	2 CR (2+0+0)
ITHS 101	Information Technology for Health Science	2 CR (1+1+0)	CHEM 102	Chemistry for Health Science	4 CR (3+1+0)
EDU 101	Study Skills	2 CR (1+1+0)	ARAB 101	Arabic Language	2 CR (2+0+0)
ARAB 101	Medical Terminology	2 CR (2+0+0)	BIOL 102	Cell Biology and Genetics	3 CR (2+1+0)
			EDU 102	Communication Skills	2 CR (1+1+0)
Total		16	Total		17

SECOND YEAR					
Semester -1(Level-3)			Semester -2(Level-4)		
Course Code	Course Title	Credit Hours	Course Code	Course Title	Credit Hours
ANAT 211	Anatomy	3 CR (2 + 1 + 0)	BIOC 221	Biochemistry-II	3 CR (2 + 1 + 0)
BIOC 211	Biochemistry -I	2 CR (2 + 0 + 0)	PHCH 221	Pharmaceutical Analytical chemistry	4 CR (3 + 1 + 0)
PHCT 211	Mathematics	1 CR (1 + 0 + 0)	PHCH 222	Intro to Medicinal Chemistry	1 CR (1 + 0 + 0)

PHCH 211	Pharmaceutical Organic Chemistry	3 CR (3 + 0 + 0)	PHCT 221	General Immunology	2 CR (2 + 0 + 0)
PHSL 211	Physiology-I	3 CR (2 + 1 + 0)	PHCT 222	Pharmaceutical Microbiology	3 CR (2 + 1 + 0)
PSYC 211	Psychology & Behavioral Science	2 CR (2 + 0 + 0)	PHSL 221	Physiology-II	2 CR (2 + 0 + 0)
PHCL 211	Intro to Pharmacy Profession	1 CR (1 + 0 + 0)	PHCL 221	Basic Clinical Skills	1 CR (0 + 0 + 1)
PHCL 212	First Aid	1 CR (0 + 0 + 1)			
Total		16	Total		16

THIRD YEAR					
Semester -1 (Level-5)			Semester -2 (Level-6)		
Course Code	Course Title	Credit Hours	Course Code	Course Title	Credit Hours
PHCH 311	Introduction to Natural Product	2 CR (2 + 0 + 0)	PHCH 321	Medicinal Chemistry-2	4 CR (3 + 1 + 0)
PHCH 312	Drug Discovery and Development	1 CR (1 + 0 + 0)	PHCL 321	Pathophysiology -II	2 CR (2 + 0 + 0)
PHCH 313	Medicinal Chemistry-1	2 CR (2 + 0 + 0)	PHCT 321	Pharmaceutics-II	3 CR (2 + 1 + 0)
PHCL 311	Pathophysiology-I	2 CR (2 + 0 + 0)	PHCT 322	Biopharmaceutics	2 CR (2 + 0 + 0)
PHCL 312	Pharmacy Practice	2 CR (2 + 0 + 0)	PHLG 321	Pharmacology-II	3CR (3 + 0 + 0)
PHCT 311	Pharmaceutics-I	3 CR (2 + 1 + 0)	PHLG 322	Chemotherapy	2 CR (2 + 0 + 0)

PHLG 311	Pharmacology-I	4 CR (3 + 1 + 0)	PHCH e 322 PHCLe 323 PHCTe 323	Electives: Int. to Drug Design Pharmacy seminar Pharmaceutical Industry	1 CR (1+ 0+0) (0+ 1+0) (1+0+0)
SERV 311	Community Service	1 CR (0 + 1+ 0)			
Total		17	Total		17

Introductory Pharmacy Practice-1 (IPP-1) Summer Training (After Year 3)	
IPP 321	Introductory Pharmacy Practice- IPP-1

FOURTH YEAR					
Semester -1 (Level-7)			Semester -2 (Level-8)		
Course Code	Course Title	Course Code	Course Title	Course Code	Course Code
PHCL 411	Pharmacotherapy-I	4 CR (3 + 1 + 0)	PHCL 421	Pharmacotherapy-II	4 CR (3 + 1 + 0)
ISLM 407	Ethics & Professionalism	2 CR (1 + 1 + 0)	PHCL 422	Drug and Poison Information Services	2 CR (1 + 1 + 0)
PHCT 411	Pharmaceutics -III	2 CR (2 + 0 + 0)	PHCL 423	Clinical Skills	1 CR (0 + 0 + 1)
PHLG 411	Pharmacology -III	2 CR (2 + 0 + 0)	PHCH 421	Pharmacopeial Analysis	3 CR (3 + 0 + 0)
PHLG 412	Toxicology	3 CR (3 + 0 + 0)	PHCT 421	Basic Pharmacokinetics	2 CR (2 + 0 + 0)
SAFE 407	Patient Safety	2 CR (1 + 1 + 0)	PHLG 421	Pharmacology-IV	2 CR (2 + 0 + 0)
RESM 407	Research Methodology & Biostatistics	3 CR (2 + 1 + 0)	PROJ 408	Research Project-1	1 CR (0 + 1 + 0)

			PHCLe 424	Elective Course: Pediatric Drug Ther.	1 CR
			PHCLe 425	Comprehensive Diabetes Managmt.	(1 + 0 + 0)
			PHCLe 426	Health Informatics	(1 + 0 + 0)
Total		18	Total		16

Introductory Pharmacy Practice-2 (IPP-2) –Summer Training (After Year 4)	
IPP 421	Introductory Pharmacy Practice- IPP-2

FIFTH YEAR					
Semester -1 (Level-9)			Semester -2 (Level-10)		
Cours e Code	Course Title	Course Code	Cours e Title	Course Code	Course Title
PHCL 511	Pharmacotherap y-III	4 CR (3 + 1 + 0)	PHCL 521	Pharmacotherap y-IV	4 CR (3 + 1 + 0)
PHCL 512	Pharmacy Management	2 CR (2 + 0 + 0)	PHCL 522	Pharmacoecono mics and epidemiology	3 CR (3 + 0 + 0)
PHCL 513	Clinical Pharmacokinetic s	1 CR (1 + 0 + 0)	PHCL 523	Evidence-based Medicine	2 CR (1 + 1 + 0)
PHCL 514	Pharmacogenom ics	1 CR (1 + 0 + 0)	PHCL 524	Pharmacovigilan ce	1 CR (1 + 0 + 0)
PHCL 515	Advanced Pharmacy Practice	2 CR (1 + 1 + 0)	PHCL 525	Pharmacy Law in KSA	1 CR (1+0+0)

PHCT 511	Dispensing of Medication	2 CR (1 + 1 + 0)	PHCT 521	Pharmaceutical Biotechnology	2 CR (2 + 0 + 0)
PHLG 511	Alternative Medicine	2 CR (2 + 0 + 0)	PHCT 522	Over the Counter Drugs	2 CR (2 + 0 + 0)
PHLG 512	Drugs of Abuse	2 CR (2 + 0 + 0)	PHCT 523	Nuclear Pharmacy	1 CR (1 + 0 + 0)
PROJ 509	Research Project-2	1 CR (0 + 1 + 0)	PHLGe 521 BIOSe 521	Directed Research Applied Biostatistics	1 CR (0 + 1 + 0) (1 + 0 + 0)
Total		17	Total		17

Elective Courses: Student must complete three elective courses, one in each year from third to the fifth year of the program.

ELECTIVE COURSES		
Course Code & No.	Course Title	Credit Hours
Third Year Elective Courses		
PHCHe 322	Introduction to Drug Design	1 (1+0+0)
PHCLe 323	Pharmacy Seminar	1 (0+1+0)
PHCTe 323	Pharmaceutical Industry	1 (1+0+0)
Fourth Year Elective Courses		
PHCLe 424	Pediatric Drug Therapy	1 (1+0+0)
PHCLe 425	Comprehensive Diabetes Management	1 (1+0+0)
PHCLe 426	Health Informatics	1 (1+0+0)
Fifth Year Elective Courses		
PHLGe 521	Directed Research	1 (0+1+0)
BIOSe 521	Applied Biostatistics	1 (1+0+0)
Elective course -e		

CLERKSHIP TRAINING DESCRIPTION:

CLERKSHIPS FOR 6 YEARS		
No.	Year (6) Semester (1)	Hrs
1	Clerkship-I	3
2	Clerkship-II	3
3	Clerkship-III	3
4	Clerkship-IV	3
Total		12
No.	Year (6) Semester (2)	Hrs
1	Clerkship-V	3
2	Clerkship-VI	3
3	Clerkship-VII	3
4	Clerkship-VIII	3
Total		12
No.	Year (6) Semester (3) (Summer)	Hrs
1	Clerkship-IX	3
2	Clerkship-X	3
Total		6

CLERKSHIP ROTATION:

Course Code & No.	Rotation
PHCL- 611	Internal Medicine (Cardiology)
PHCL- 612	Internal Medicine (Endocrinology)
PHCL- 613	Internal Medicine (Gastroenterology)
PHCL- 614	Internal Medicine (Infectious diseases)
PHCL- 615	Internal Medicine (Nephrology)
PHCL- 616	Internal Medicine (Pulmonary)
PHCL- 617	In-Patient Pharmacy services
PHCL- 618	Out Patient Pharmacy Services
PHCL- 619	Drug Information & Poison Service
PHCL- 621	Ambulatory care

Course Code & No.	Rotation
PHCL- 622	Internal Medicine(Neurology)
PHCL- 623	Internal Medicine (Psychiatry)
PHCL- 624	Internal Medicine (Oncology/Hematology)
PHCL- 625	Emergency Care
PHCL- 626	Critical Care-Units
PHCL- 627	Pediatrics
PHCL- 628	Nutritional Support
PHCL- 629	Poison Control/Toxicology Service

(A) Core Clerkships Rotations are:(5) Clinical Rotations, (1) Inpatient Pharmacy, (1) Out Patient Pharmacy, (1) Drug Information Services.

(B): Elective Rotations: Students select two other elective rotations.

The field experience training period (6th year) is composed of 40 weeks (10 marked rotations) to be completed over the last 10 months of the program (16 weeks per semester).

Each rotation offers 3 credit hours and consists of 4 weeks of training, five days a week, eight contact hours a day (40 hours per week). Of these 10 rotations, 9 are mandatory and 1 is an elective.

PHARM. D. PROGRAM GRADUATE ATTRIBUTES

Graduates' attributes enable graduate to have the knowledge, skills, and values to cope with changing employment opportunities, but they must also understand who they are and how they can contribute positively to the diversity they will encounter in their local, regional, and global communities by understanding the benefits and constraints of their disciplinary perspectives. The Pharm. D. program equip students and graduates competent clinical pharmacists capable of providing comprehensive pharmaceutical care to the community.

Graduate Attributes-GA
GA 1. Patient Centered Care Provider
Ability to provide evidence-based patient care as a team member or leader and develop therapeutic care plans based on well-established up to date guidelines in consideration with cultural diversity and professional issues that might affect the outcomes.
GA 2. Profound Disciplinary Knowledge & Skills
Ability to employ profound knowledge of fundamental, pharmaceutical, social, and clinical sciences in pharmacy profession and research for promotion of healthcare.
GA 3. Research Skills
Ability to design, conduct and disseminate research activities in various settings promote community healthcare.
GA 4. Problem Solving, Critical Thinking & Decision Making
Ability to critically appraise and make decisions for medication related problems to optimize medication use and promote patient care.

GA 5. Ethical Practice, Leadership and Professionalism
Ability to work in accordance with ethical guidelines and regulations and serve as a credible role model/leader by exhibiting the value and behaviors of a professional.
GA 6. Digital Capabilities
Ability to utilize recent technologies and resources for patient care & lifelong learning for improving professional skills and serving the community.
GA 7. Communication and Collaboration
Ability to communicate and collaborate effectively with healthcare professionals, administration, support services, patients and caregivers with complete respect of cultural diversity.
GA 8. Providing Services to the Community
Ability to work individually or collaboratively with healthcare providers to improve community awareness on medications & diseases management for better community healthcare outcomes.
GA 9. Management of Medication- Use Systems
Ability to participate in drug manufacturing and efficient distribution, usage and maintaining of high-quality product to improve patient safety.

PHARM. D. PROGRAM LEARNING OUTCOMES

The Program Learning Outcome classified in all the domains of NQF aligned with the Pharm. D. Program mission. A student at the time of graduation from the Pharm. D. program at ISNC will have experiences gained from all the three domains of learning outlined in the NQF for Higher Education, namely

- ✓ Knowledge and Understanding
- ✓ Skills
- ✓ Values

The outcomes in all the three domains are well incorporated both in the program level as well as individually the course level and these domains complement each other which is evidenced in the PLO mapping matrix with the courses. Emphasis was given to assessment methods since it is often assessment that drives student priorities for learning, which demands for the establishment of reliable and valid assessment methods.

Pharm. D. Program Learning Outcomes (PLOs)	
1. Knowledge and Understanding: At the end of the program the graduate should be able to	
K1	Describe the basic principles and concepts of basic, pharmaceutical, clinical and social sciences related to pharmacy profession.
K2	Outline principles of drug design, Structure Activity Relationship, synthesis, analysis and formulation of pharmaceutical dosage forms.
K3	Recognize ethical, legal and economic aspects of pharmacy profession.
K4	Outline principles of research methodology.
2.0 Skills: At the end of the program the graduate should be able to	
S1	Apply concepts and principles of pharmaceutical, clinical sciences in pharmacy profession.
S2	Develop therapeutic care plans using the principles of evidence-based healthcare and critical appraisal.

S3	Discuss drug design, screening, synthesis, analysis, efficacy and safety of medications used in different diseases and health-related conditions.
S4	Demonstrate basic research skills
S5	Utilize statistical and pharmacy specific software.
S6	Interpret data extracted by different statistical methods in bio-analysis and forensics.
S7	Perform effective pharmaceutical procedures in drug screening, analysis, synthesis, manufacturing and design.
S8	Demonstrate basic clinical skills and first aid measures in health care settings.
3.0 Values: At the end of the program the graduate should be able to	
V1	Demonstrate professional attitude and ethical behavior in pharmacy practice, research and industry.
V2	Demonstrate effective teamwork and inter-professional collaboration skills.
V3	Communicate effectively with colleagues, healthcare providers, patients and their families, pharmaceutical industrialists and other community members.






TEACHING METHODS

- ✓ Interactive Lectures
- ✓ Group Discussions
- ✓ Quizzes
- ✓ Seminars
- ✓ Tutorials
- ✓ Role Play
- ✓ Case Based Teaching Sessions
- ✓ Clinical Teaching Sessions
- ✓ Self-Directed Learning (SDL)
- ✓ E- Learning
- ✓ Audio Video Demonstrations
- ✓ Project-Based Learning

- ✓ Independent Learning Activities (IDL)
- ✓ Skills Lab and Simulation Training Sessions
- ✓ Field Visits
- ✓ Field Work
- ✓ Computer Lectures and Computer Lab.
- ✓ Software Data Analysis And Extraction
- ✓ Journal Club
- ✓ Practical Lab Sessions
- ✓ Hands-On Practical Activities
- ✓ Clinical Clerkships
- ✓ Flipped Classrooms

ASSESSMENT METHODS

- ✓ Multiple choice questions (MCQ)
- ✓ Case based Multiple Choice Questions (MCQs).
- ✓ Short Answer Questions (SAQs).
- ✓ Independent Learning (IDL Rubrics).
- ✓ Formative Quizzes and problem solving
- ✓ Practical exam/ observation
- ✓ Assignments (based on Scoring Rubrics).
- ✓ Objective Structured Practical Examination (OSPE)
- ✓ Objective Structured Clinical Examination (OSCE)
- ✓ Case Discussion & presentation Evaluation Form
- ✓ Seminar Evaluation Form
- ✓ Project Evaluation Form
- ✓ Oral Assessment based on Rubrics
- ✓ Drug evaluation monograph Practical Exams
- ✓ Assignments:
 - ✚ Poster Presentation
 - ✚ Drug Evaluation Monograph

-  Journal Club Presentation
-  Patient Education Material
-  Research Articles
-  Statistical Analysis of Research Data
-  Scoring Rubrics

*Kindly visit college website (digital library) for detailed guidelines of Pharm.D. Program assessments

Grading and GPA

The program follow the universal grading system as given below.

Symbol	Mark Limits	Points		Meanings
A+	95-100	5.0	4.0	Exceptional
A	90-95	4.75	3.75	Excellent
B+	85-90	4.5	3.5	Superior
B	80-85	4.0	3.0	Very Good
C+	75-80	3.5	2.5	Above Average
C	70-75	3.5	2.0	Good
D+	65-70	2.5	1.5	High Pass
D	60-65	2.0	1.0	Pass
F	Less 60	1.00	0	Fail

DRESS CODE

Students dress should reflect high standards of personal self-image so that each student may share in promoting a positive, healthy and safe atmosphere within the College community.

Appropriate distinction is made between the proper attire for class, practical/clinics, formal affairs, relaxation, and play. In general, a student is expected wear scrub suit and a lab coat. In addition, the female students are advised to abide by the Islamic

dress code. Must wear Lab coat, Full Shirt and Trouser (Males), Head cover (Female); color of the scrub should be **light blue**. Weird, designed dresses are not allowed, no casual dress allowed. Must wear shoes; slipper and sandals are not allowed.

IMPORTANT CONTACTS

No	Name	Contact Number: 6356555 Ext	
		Male	Female
1.	Secretary for Vice Dean Pharm. D. Program	408	
2.	Maintenance Department	639	
3.	Admission/Registration	151/180	131/161/ 163/170
4.	Academic Affairs	222/117/121/272	
5.	Student Affairs	105	
6.	Student Support Unit	455	
7.	Library	145	427/468
8.	Research Center	441	
9.	Finance	150/175	

NOTES

1. If student fails to report/attend the classes in the first three weeks after the commencement of the semester, he/she is disqualified from that semester.
2. If a student discontinues the studies in ISNC without prior intimation, then a fine is imposed on the student.
3. If student studies three weeks in a semester and later discontinues, he/she is not eligible for any refund.



PHARM. D. PROGRAM MISSION

To graduate competent clinical pharmacists capable of providing comprehensive pharmaceutical care to the community with an aptitude to Lifelong learning through provision of knowledge, clinical skills, research abilities and ethics of practice within a motivating learning environment.