



**IBN SINA NATIONAL COLLEGE FOR MEDICAL
STUDIES, JEDDAH**

KINGDOM OF SAUDI ARABIA

Nursing Program

STUDENT HAND BOOK



**Copyright © 2019 Ibn Sina National College for
Medical Studies
Jeddah, KSA**

All rights reserved. No part of this document may be reproduced in any form or by any means, including information storage and retrieval systems, without permission in writing from Ibn Sina National College for Medical Studies.

TABLE OF CONTENT:

No.	Description	Page No.
1	Mission of the program	4
2	Nursing Program Over View	4
3	Vice Dean of Nursing Program	7
4	Summary of credit hours and duration	8
5	Organization Chart – Nursing Program	8
6	Curriculum Study Plan	9
7	Program Learning Outcomes	14
8	Teaching Methods	16
9	Assessment Methods	16
10	Dress Code	17
11	Important Contact Numbers	18

NURSING PROGRAM MISSION

To graduate a competent nurse capable of providing comprehensive healthcare services in Saudi Arabia through the provision of outstanding education, research abilities and nursing practice ethics within a stimulating learning environment.

NURSING PROGRAM OVERVIEW

The NURSING program has been designed carefully to serve the educational needs of the citizens and residents of Saudi Arabia as well as to provide to the employment needs of health care sector. This program has also been designed to provide service to the community and bridge the gap between the numbers of nurses to the number of patients. Nursing Program is working hard for accreditation by Education Evaluation Commission: National Centre for Academic Accreditation and Assessment, Saudi Arabia

Established in the year 1429 H. corresponding to 2008, duly licensed by the MOHE (began its operations in its own premises located on the Mahjar Street, next to the King Abdul Aziz Hospital, in the southern part of Jeddah.

The campus of ISNC is spread over an area of 27,500 sqm. and is self-contained and accommodates all necessary facilities including the Ibn Sina College hospital to serve the present number of students. Design of the main building is

in the shape of the letter 'H' where each of the wings houses the genders separately, yet facilitates easy communication and access to critical facilities and the central administrative setup. However, additional hospitals (New Al Jedani Hospital, Ghulail and Al Jedani Hospital, Al Safa) from within the Al Jedani group are also deployed in training the students in order to ensure adequate exposure to each student to clinical facilities.

A comprehensive academic curriculum designed by King Abdullah Research & Consulting Institute, aims to provide technologically superior medical education to the students enrolled in this program. The innovative curriculum is delivered expertly by the faculty members under an organ system based education. After four years of rigorous training under the masterful guidance and supervision of multinational faculty members, the future nursing practitioners are expected to deliver quality nursing care in the Kingdom of Saudi Arabia

Field experience activities are abundant in the program both during clerkships and internship. The students benefit largely from community activities and visiting the governmental hospitals during their training and get exposed to a variety of cases. The introduction of Saudi Digital library, Wi-Fi and more digital learning resources have added to the teaching and learning process.

Commendable work has been done to identify Program learning outcomes (PLO) aligned with the five learning domains of the National Qualification Framework. The establishment of a Medical Education Unit (MEU) has helped to develop the Course Learning Outcomes (CLO) and align with the PLOs. PLOs, Assessment Methods, and Teaching

Strategy are aligned to articulate a consistent agreement between the student learning and teaching methods. The CLOs are well explained to the students at the beginning of each session.

ISNC is accredited by Education Evaluation Commission: National Center for Academic Accreditation and Assessment, Saudi Arabia (EEC-NCAAA).

Benefits of Accreditation:

- » Accreditation assures that a program has met quality standards set by the profession.
- » Accreditation helps students and their parents choose quality college programs.
- » Accreditation enables employers to recruit graduates they know are well-prepared.
- » Accreditation provides a structured mechanism to continuously assess, evaluate, and improve the quality of the program.
- » Accreditation is an important factor when a college or university is deciding whether to accept transfer credit from a student's previous school.

VICE DEAN NURSING PROGRAM,

Dr. ABDULAZIZ ALYAHYA, MSc, PhD, USA

Received his PhD in Pharmacology and Toxicology from university of Kansas, Lawrence, KS, United States. He is Associate Professor in Department of Pharmacology, College of Pharmacy, King Saud University, Riyadh. Dr. Abdulaziz ALYahya is currently the Vice Chairman, Board of Trustees, Ibn Sina National College for Medical Studies, Jeddah, KSA. In addition, he is an associate member of international collaboration on repair discoveries (ICORD), University of British Columbia, Vancouver, BC, Canada. Also, he is a member of the society for Neuroscience.

SUPERVISOR OF NURSING PROGRAM, DR. AZZA ANWAR ALY.

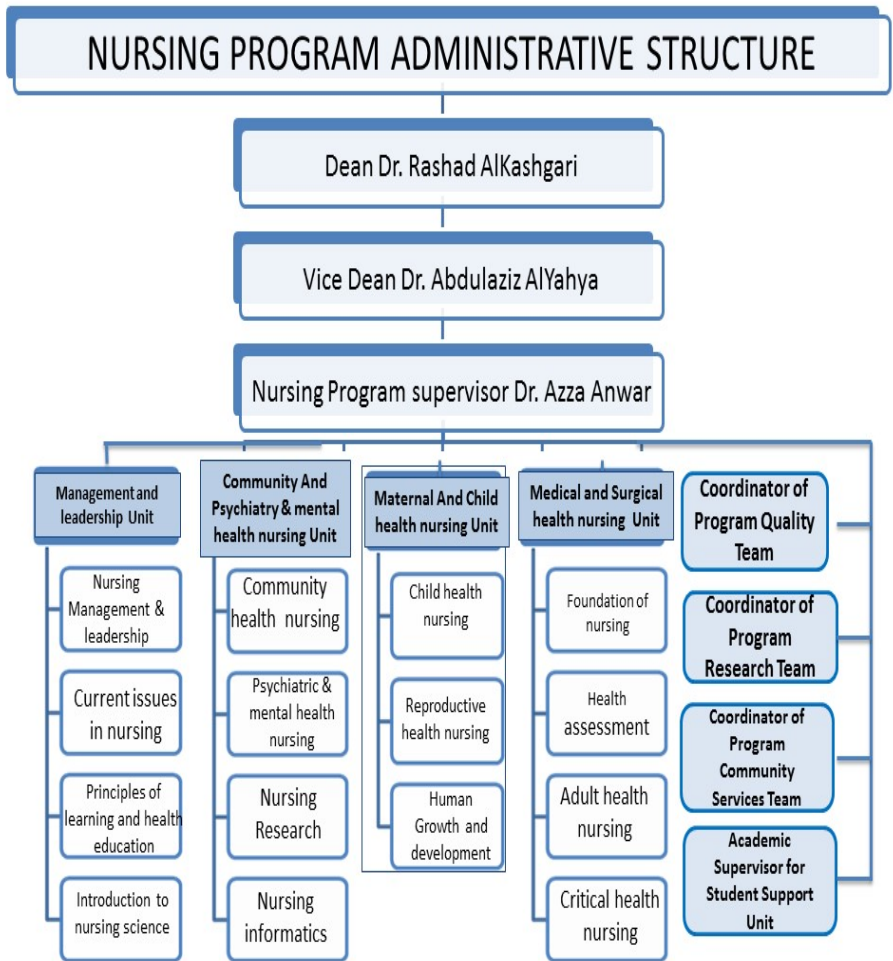
Received her PhD in Medical & Surgical Nursing from Suez Canal University, Egypt. She is Assistant Professor in Department of Medical & Surgical Nursing, College of Nursing, Damanhour University, Egypt. Dr. Azza Anwar is currently the supervisor of nursing program, Member in Faculty Board, Quality Team , Research Committee, Student Assessment Committee and Students Advisor Committee in Ibn Sina National College for Medical Studies ; Jeddah, KSA. In addition she is an associate member European Resuscitation Council, Arabian Association for Emergency

and Accidental Trauma in U.A.E., Arabian Association for Hospital Administration, and Arabian Association for Counseling and Training. Also, she is a member of Egyptian Diabetic Association, Egyptian Union of Nursing, and Association of Faculties of Nursing Graduates.


SUMMARY OF CREDIT HOURS AND DURATION

Preparatory Phase	1 year	34
Nursing courses	3 years	96
Internship*	1 year	-
Total Credit Hours	5 Years	130 hours

ORGANIZATION CHART



CURRICULUM STUDY PLAN

 Kingdom of Saudi Arabia Ibn Sina National College for Medical Studies in Jeddah Nursing Program																																	
YEAR 1: PREMEDICAL																																	
SEMESTER	SEMESTER 1																SEMESTER 2																
	1	2	3	4	5	6	7	8*	9	10	11	12	13	14	15	16	17	18	19	20	21	22	23	24	25*	26	27	28	29	30	31	32	33
COURSES	ARABIC LANGUAGE-I [ARAB 101] 2 CR (2+0+0)																ARABIC LANGUAGE-II [ARAB 103] 2 CR (2+0+0)																
	ENGLISH LANGUAGE-I [ENGL 101] 6 CR (6+0+0)																ENGLISH LANGUAGE-II [ENGL 102] 3 CR (2+1+0)																
	MEDICAL TERMINOLOGY [ARAB 105] 2 CR (2+0+0)																BIOLOGY [BIOL 101] 4 CR (3+1+0)																
	BIOSTATISTICS [BIOS 101] 2 CR (2+0+0)																INTRODUCTION TO CHEMISTRY [CHEM 101] 4 CR (3+1+0)																
	COMPUTER FOR HEALTH SCIENCES-I [COMP 101] 2 CR (1+1+0)																GENERAL PHYSICS [PHYS 101] 3 CR (2+1+0)																
	ISLAMIC CULTURE [ISLM 101] 2 CR (2+0+0)																COMMUNICATION SKILLS [COMM 201] 2 CR (2+0+0)																
TOTAL 16 CR																TOTAL 18 CR																	
END OF SEMESTER EXAM																																	
END OF SEMESTER EXAM																																	
* MID-SEMESTER EXAM																																	



Kingdom of Saudi Arabia
Ibn Sina National College for Medical Studies in Jeddah
Nursing Program

YEAR 2																																		
SEMESTER	SEMESTER 1																SEMESTER 2																	
	WEEKS	1	2	3	4	5	6	7	8*	9	10	11	12	13	14	15	16	17	18	19	20	21	22	23	24	25*	26	27	28	29	30	31	32	33
COURSES	INTRODUCTION TO NURSING SCIENCE [NUR 111] 3 CR (3+0+0)																HEALTH ASSESSMENT {THEORY} [NUR 211] 2 CR (2+0+0)																	
	HUMAN ANATOMY [RHS 242] 3 CR (3+0+0)																HEALTH ASSESSMENT {PRACTICE} [NUR 212] 2 CR (0+2+0)																	
	HUMAN PHYSIOLOGY [RHS 243] 3 CR (3+0+0)																PATHOPHYSIOLOGY [CLS 323] 3 CR (3+0+0)																	
	FOUNDATIONS OF NURSING {THEORY} [NUR 122] 3 CR (3+0+0)																PHARMACOLOGY [RHS 366] 2 CR (2+0+0)																	
	FOUNDATIONS OF NURSING {PRACTICE} [NUR 123] 3 CR (0+3+0)																ADULT HEALTH NURSING-I {THEORY} [NUR 224] 3 CR (3+0+0)																	
	BIOCHEMISTRY [CHS 262] 3 CR (2+1+0)																ADULT HEALTH NURSING-I {PRACTICE} [NUR 225] 4 CR (0+0+4)																	
TOTAL 18 CR																TOTAL 16 CR																		
END OF SEMESTER EXAM																																		
END OF SEMESTER EXAM																																		

* MID-SEMESTER EXAM



Kingdom of Saudi Arabia
Ibn Sina National College for Medical Studies in Jeddah
Nursing Program

YEAR 3																																		
SEMESTER	SEMESTER 1																SEMESTER 2																	
	WEEKS	1	2	3	4	5	6	7	8*	9	10	11	12	13	14	15	16	17	18	19	20	21	22	23	24	25*	26	27	28	29	30	31	32	33
COURSES	HUMAN GROWTH AND DEVELOPMENT [NUR 311] 3 CR (3+0+0)																REPRODUCTIVE HEALTH NURSING [NUR 325] {THEORY} 3 CR (3+0+0)																	
	ADULT HEALTH NURSING-II [NUR 312] {THEORY} 3 CR (3+0+0)																REPRODUCTIVE HEALTH NURSING [NUR 326] {PRACTICE} 3 CR (0+0+3)																	
	ADULT HEALTH NURSING-I [NUR 313] {PRACTICE} 4 CR (0+0+4)																CHILD HEALTH NURSING [NUR 327] {THEORY} 3 CR (3+0+0)																	
	CLINICAL NUTRITION [CHS 226] 3 CR (3+0+0)																CHILD HEALTH NURSING [NUR 328] {PRACTICE} 3 CR (0+0+3)																	
	MICROBIOLOGY [CLS 212] 4 CR (3+1+0)																NURSING INFORMATICS [NUR 329] 3 CR (3+0+0)																	
TOTAL 17 CR																TOTAL 15 CR																		
END OF SEMESTER EXAM																																		

* MID-SEMESTER EXAM



Kingdom of Saudi Arabia
Ibn Sina National College for Medical Studies in Jeddah
Nursing Program

SEMESTER		YEAR 4																																	
		SEMESTER 1								SEMESTER 2																									
WEEKS		1	2	3	4	5	6	7	8*	9	10	11	12	13	14	15	16	17	18	19	20	21	22	23	24	25*	26	27	28	29	30	31	32	33	34
COURSES		CRITICAL HEALTH NURSING [NUR 411] {THEORY} 3 CR (3+0+0)								COMMUNITY HEALTH NURSING [NUR 425] {THEORY} 3 CR (3+0+0)									END OF SEMESTER EXAM																
		CRITICAL HEALTH NURSING [NUR 412] {PRACTICE} 3 CR (0+0+3)								COMMUNITY HEALTH NURSING [NUR 426] {PRACTICE} 3 CR (0+0+3)																									
		PSYCHIATRIC/MENTAL HEALTH NURSING [NUR 413] {THEORY} 3 CR (3+0+0)								NURSING MANAGEMENT AND LEADERSHIP [NUR 427] {THEORY} 3 CR (3+0+0)																									
		PSYCHIATRIC/MENTAL HEALTH NURSING [NUR 414] {PRACTICE} 3 CR (0+0+3)								NURSING MANAGEMENT AND LEADERSHIP [NUR 428] {PRACTICE} 2 CR (0+0+2)																									
		PRINCIPLES OF LEARNING AND HEALTH EDUCATION [NUR 226] 2 CR (2+0+0)								NURSING RESEARCH [NUR 429] 3 CR (3+0+0)																									
		CURRENT ISSUES IN NURSING [NUR 324] 2 CR (2+0+0)																																	
		TOTAL 16 CR								TOTAL 14 CR																									

* MID-SEMESTER EXAM

INTERNSHIP FOR FIFTH YEAR STUDENTS:

CLINICAL ROTATION AREA

To achieve the ILO's the internship rotations will perform in a wide range of clinical areas including:

CLINICAL AREA	DURATION
SURGICAL UNIT	3months } 1 Ward 1 OR 1 Recovery room(PACU)
MEDICAL UNIT	2 months
OB/GYN (MATERNITY) UNIT	2 months : 1 DR & LR 1 OB/GYN
PEDIATRIC UNIT	2 months : 1 Nursery 1 Pediatric
INTENSIVE CARE UNIT	1 month : ICU
NEONATAL INTENSIVE CARE UNIT	1 month :NICU
EMERGENCY DEPARTMENT	1 month

NURSING PROGRAM LEARNING OUTCOMES

The Program Learning Outcome classified in all the domains of NQF aligned with the Nursing program mission. A student at the time of graduation from the Nursing program at ISNC will have experiences gained from all the five domains of learning outlined in the NQF for Higher Education, namely

- ✓ Nursing Knowledge
- ✓ Cognitive skills
- ✓ Interpersonal skills
- ✓ Communication and Numerical skills
- ✓ Psychomotor skills

The outcomes in all the five domains are well incorporated both in the program level as well as individually the course level and these domains complement each other which is evidenced in the PLO mapping matrix with the courses. Emphasis was given to assessment methods since it is often assessment that drives student priorities for learning, which demands for the establishment of reliable and valid assessment methods.

1. Knowledge Domain:	
By the end of Nursing Program, students will be able to:	
1.1	Describe normal development, structure, function of human body and different pathogenic mechanisms of common diseases.
1.2	Outline the roles of nurse in health improvement activities within the content of collaborative care
1.3	List the different strategies and methods for health education
1.4	Recognize best practice of nursing performance and this evidence based results.
2. Cognitive Skills Domain:	
By the end of Nursing Program, students will be able to:	
2.1	Design comprehensive nursing care plans for prevention and control of common health problems.
2.2	Interpret patients' finding to determine nursing diagnosis and essential nursing care needed.
2.3	Predict the problem in support of care through critical thinking for decision making.
2.4	Justify effective utilization of learning skills and resources in nursing practice at clinical and community level.
3. Interpersonal Skills & Responsibility Domain:	
By the end of Nursing Program, students will be able to:	
3.1	Demonstrate of honesty, respect, personal integrity, accountability and Islamic ethic dealing with patients, community members and health care teams.
3.2	Demonstrate effective leadership, delegation authority, professionalism and accountability teamwork while working as members of healthcare team.
4. Communication, Information Technology, Numerical Skills Domain	

By the end of Nursing Program, students will be able to:	
4.1	Appraise current and evolving technology to access information and data in support of care delivery.
4.2	Integrate therapeutic communication and documentation that facilitates interaction with patients, health team and public.
4.3	. Illustrate health teaching and counseling programs to individual/ groups of client, to relatives and to the community according to needs.
5. Psychomotor Skills Domain:	
By the end of Nursing Program, students will be able to:	
5.1	Demonstrate health assessment technique of individuals, families and community for diagnosis of nursing problems and health needs.
5.2	Perform comprehensive nursing procedures utilizing necessary equipment for protection and promotion of health for individuals, families an community.
5.3	Demonstrate theories of management and leadership toward the organization while implementing client care.

TEACHING METHODS

- ✓ Interactive Lectures
- ✓ Group discussions
- ✓ In class written reflections
- ✓ Assignment
- ✓ Role Play
- ✓ Clinical Teaching Sessions
- ✓ E- Learning

- ✓ Audio video demonstrations
- ✓ Skills Lab and Simulation Training Sessions
- ✓ Field Visits
- ✓ Field Work
- ✓ Computer lectures and computer lab.
- ✓ Clinical internship

ASSESSMENT METHODS

- ✓ Multiple choice questions (MCQ)
- ✓ Short Assay questions (SAQ)
- ✓ Case Based Multiple Choice Questions
- ✓ Objective Structured Clinical Examination (OSCE)
- ✓ Direct Observations(based on Rubrics)
- ✓ Simple Matching Questions
- ✓ Continuous activity assessment (Quizzes')
- ✓ Practical exams
- ✓ Assignments :
 - ✚ Poster Presentation
 - ✚ Patient education Material
 - ✚ Research Articles
 - ✚ Scoring Rubrics

*Kindly visit college website (digital library) for detailed guidelines of Nursing Program assessments

Grading and GPA

The program follow the universal grading system as given below.

Symbol	Mark Limits	Points		Meanings
A+	95-100	5.0	4.0	Exceptional
A	90-95	4.75	3.75	Excellent
B+	85-90	4.5	3.5	Superior
B	80-85	4.0	3.0	Very Good
C+	75-80	3.5	2.5	Above Average
C	70-75	3.5	2.0	Good
D+	65-70	2.5	1.5	High Pass
D	60-65	2.0	1.0	Pass
F	Less 60	1.00	0	Fail

DRESS CODE

Students dress should reflect high standards of personal self-image so that each student may share in promoting a positive, healthy and safe atmosphere within the College community.

Appropriate distinction is made between the proper attire for class, practical/clinics, formal affairs, relaxation, and play. In general a student is expected wear scrub suit and a lab coat. In addition the female students are advised to abide by the Islamic dress code. Must wear Lab coat, Head cover (Female); color of the scrub should be **white**. Weird designed dresses are not allowed, No casual dress allowed. Must wear shoes; slipper and sandals are not allowed.

IMPORTANT CONTACTS

NOTES

1. If student fails to report/attend the classes in the first three weeks after the commencement of the semester, she is disqualified from that semester.
2. If a student discontinues the studies in ISNC without prior intimation, then a fine is imposed on the student.
3. If student studies three weeks in a semester and later discontinues she is not eligible for any refund.

No	Name	Contact Number: 6356555 Ext
		Female
1.	Secretary for Vice Dean Nursing Program	408
2.	Maintenance Department	132
3.	Admission/Registration	131
4.	Academic Affairs	277
5.	Student Affairs	129
6.	Student Support Unit	453
7.	Library	445
8.	Research Center	441
9.	Community Service Unit	452
10.	Finance	175



NURSING PROGRAM MISSION

To graduate a competent nurse capable of providing comprehensive healthcare services in Saudi Arabia through the provision of outstanding education, research abilities and nursing practice ethics within a stimulating learning environment.